



Product Name	Biggo Spia Solo Assembly 2
Product Number	DX-3175-A2
Size -- Width	6.53 m / 21' 5"
Size -- Height	2.67 m / 8' 9"
Foundations	3
Concrete Volume	0.87 m <sup>3</sup> / 30.7 ft <sup>3</sup>

	<b>ASTM F-1487</b>	<b>CSA Z614</b>	<b>EN 1176</b>
Ages	2 years - 12 years	18 months - 12 years	2 years - 12 years
Capacity	6	6	6
Use Zone -- Length	9.17 m / 30' 1"	7.97 m / 26' 2"	7.13 m / 23' 5"
Use Zone -- Width	10.33 m / 33' 11"	10.27 m / 33' 8"	6.26 m / 20' 6"
Fall Height	2.29 m / 7' 6"	2.29 m / 7' 6"	1.32 m / 4' 4"
No-Encroachment Zone	Not Applicable	1.80 m / 5' 11"	Not Applicable

\*Note: Concrete must be minimum 3500 PSI / 25MPa



## Product Features:

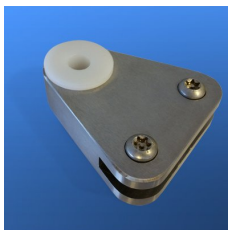
<b>SUPPORT POSTS:</b>	This will be 5 9/16" (141.3mm) OD Schedule 40 steel pipe.
<b>PENDULUM PIVOT:</b>	This will be a stainless steel pivot with a self-lubricating UHMWPE bushing and pivot.
<b>SUSPENSION CHAIN:</b>	This will be either 5/16" or 8 mm galvanized steel chain. Each chain will have independent connections at seat and pivot.
<b>SEAT CONNECTION:</b>	The seat will be connected to the chain at four points, each by a one-piece machined stainless steel sleeve. (Patent Pending)
<b>SEAT BUMPER:</b>	This will be 3 1/2" (90mm) OD textile reinforced high-pressure rubber hose, containing no external dye markings and covered with a wear and soil resistant surface.
<b>BIGGO™ SEAT:</b>	This will be a one-piece aluminum bowl, weighing with its bumper and pieces no more than 42 lbs (19 kg) empty.
<b>BASIC FASTENERS:</b>	All fasteners for component attachments are stainless steel.
<b>PAINT PROCESS:</b>	All exposed steel will be finished with polyester powder coating unless otherwise specified. Prior to the powder coating application, the surface will undergo sand blasting and will be treated with a zinc rich epoxy primer having a minimum thickness of 1.5 mils.

**INSTALLATION:** This should be installed only by a licensed playground installer, trained and certified on the relevant playground standards in place in the region of installation, e.g., NPSI, CPSI or similar certified.

**NO-ENCROACHMENT ZONE:** Where required, this will be an obstacle-free zone that does not necessarily meet the requirements of the protective surfacing zone. See applicable standard for more information.

**COMPLIANT WITH:** **CAN/CSA-Z614**  
**ASTM F-1487**  
**EN-1176**  
**CPSC Handbook for Public Playground Safety**

**OPTIONS:** Optional Equipment:  
· Polished Stainless Steel Post (Max. Qty: 4) #SS-POST



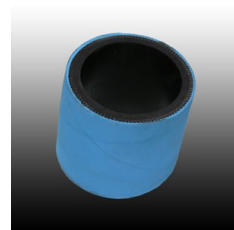
Pendulum Pivot



Galvanized Steel Chain



Biggo Seat Connector



Biggo Bumper