

Hingham Centre Play Area

Project Briefing

Prepared by Michael Monteiro and Katie Zandbergen

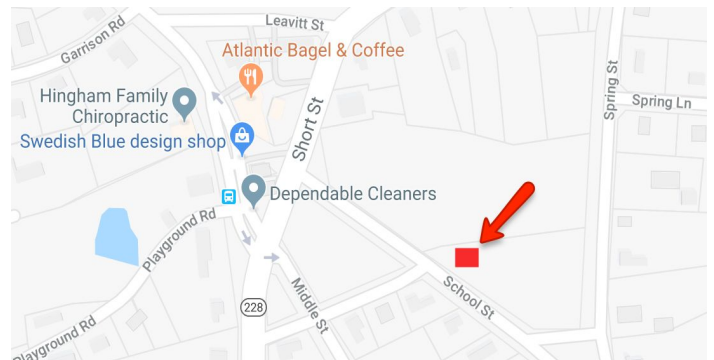
Last updated: January 4, 2020

Project Overview	3
Project Timeline	4
Proposed Design	5
Fundraising	9
Our Supporters (sampling)	10
Frequently Asked Questions	16
Project Concerns	18
Equipment Specs	20
Inspection Report	26

Project Overview

The Hingham Centre Play Area sits on a parcel of land wedged between School Street and the Hingham Centre Cemetery.

During the spring of 2017, the Town of Hingham closed the play area indefinitely due to safety and accessibility concerns. With no budget or plan to reopen the play area, a number of private citizens came together to form a volunteer committee aimed at ensuring that the play area will once again be enjoyed by families and children for generations to come.



More specifically, the project goals are as follows:

- Meet modern safety standards
- Be accessible to children of all abilities
- Serve children ages 2-5, but be dynamic enough to be enjoyed by older kids
- Keep to three pieces of equipment
- Maintain a similar size and scale to the existing play area
- Use earth tones to blend with the natural surroundings
- Choose durable, high-quality equipment that will last a long time

Project Timeline

- During the spring of 2017, a group of private citizens started a community-led initiative to replace the dilapidated play equipment adjacent to the Hingham Centre cemetery after the Town closed the play area due to safety and accessibility concerns.
- After discussing project goals and constraints in the fall of 2017, we met with Town officials and local installers, researched playground manufacturers, and consulted with local landscape architect Sean Papich.
- This led to the creation of two different design options: one featuring Dynamo equipment, and another featuring equipment from BCI Burke.
- In February 2018, we then administered an online survey¹ to gather community input on project goals, preferences, and the two design options.
- The survey results informed the plan that the Town unanimously approved in a public meeting in June 2018.
- In September 2018, the Town informed us that they had received complaints from a handful of citizens regarding the aesthetics of the proposed climber, and advised us to “come to a consensus.”
- After many discussions and several iterations, we proposed a less functional, minimalist version of the approved design.
- Though we received positive feedback from the Town, the same group of concerned citizens maintained that the new equipment would look out of place.
- We then proposed replacing the climber² with a see-saw in January 2019.
- After receiving more positive feedback from the Town in the months that followed, we received written affirmation from the Town on December 12, 2019 stating that the Selectmen are in support of the revised/compromise plan, and committed to building the new play area in the spring of 2020.

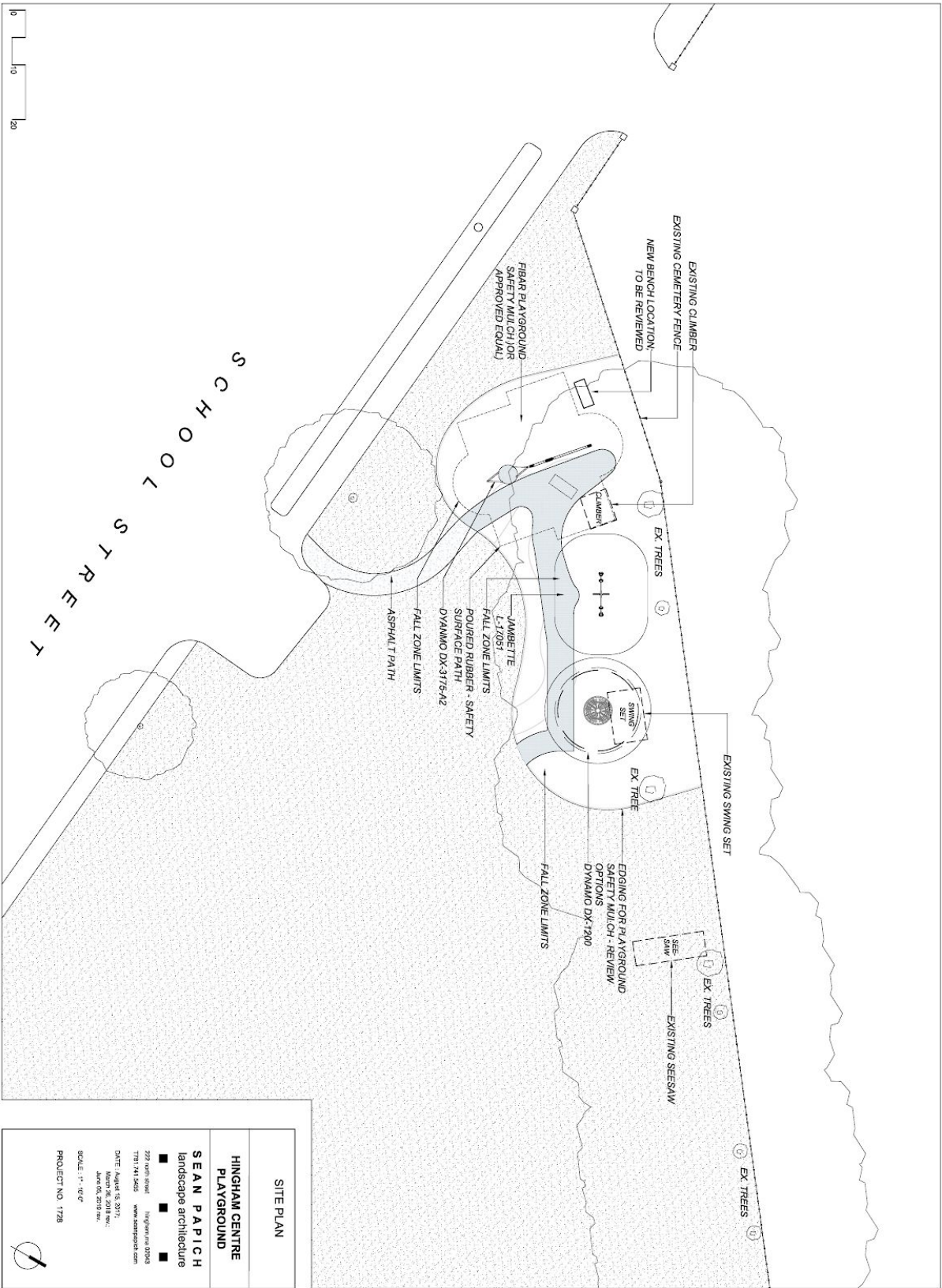
¹ The survey ran from 2/7/18 to 2/11/18 and generated 186 responses.

² We proposed replacing the climber despite it being preferred by 72% of survey respondents.

Proposed Design

The proposed design is based on feedback from both the Town and the community, and will be funded entirely by private donations. It features three pieces of play equipment to replace the old swing set, see-saw, and jungle gym. Unlike the old play area, this one features wood chips, and a neutral colored rubber pathway that is required by law to ensure that it is safe and accessible for all children, including those with disabilities. Although the equipment is rated for children ages 2-5, it is versatile enough to be enjoyed by older children as well. Finally, the equipment will be painted dark green, and the netting on the small rotating climber will be black, to ensure that the play area blends with its natural surroundings.

NOTE: The original plan approved by the Town back in June 2018 featured a framed climber in place of the see-saw, but was subsequently replaced to address aesthetic concerns about its height.



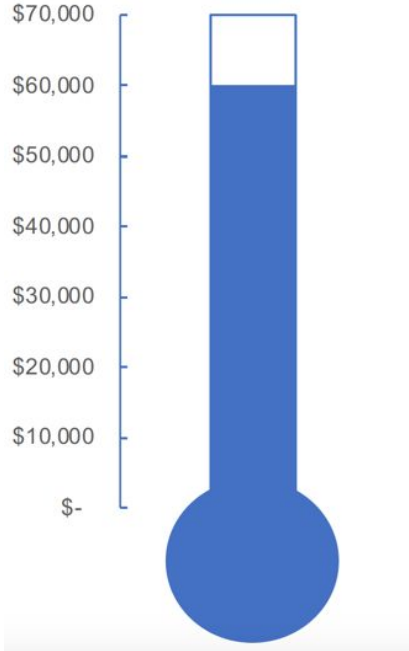
SITE PLAN	
HINGHAM CENTRE PLAYGROUND	
SEAN PAPICH landscape architecture	
222 Main Street T781 7Y4 8268 www.seanpapich.com	http://www.03043
DATE: August 15, 2017 March 26, 2018 rev. March 26, 2018 rev.	
SCALE: 1" = 10'-0"	
PROJECT NO: 1728	



Above: Photo rendering of the new play area

Fundraising

Unfortunately, playgrounds that meet modern safety and accessibility standards are not inexpensive. In this case, the cost to construct the new Hingham Centre play area is around \$70,000. The good news is that we have commitments for about \$60,000 so far.



Our Supporters (sampling)

We are writing in support of the proposed Hingham Centre play area. From the plans it appears as though the new equipment will be unobtrusive in color, type, and location and will provide a compliant and safe place for neighborhood children to play. We love seeing kids riding and walking up and down the sidewalks, playing pickup games of ball on the ball field, and taking advantage of the friendly and safe area in which we live. Replacing unsafe playground equipment with compliant equipment will serve to enhance the neighborhood not only for those families with younger children, but also for neighbors with older children and grandchildren. Any place that promotes fun, healthy outdoor activity for children, also promotes healthy neighborhood relationships.

We want to thank all of you who have volunteered your time for this project. Like neighborhood playgrounds, volunteering on a town committee also promotes healthy neighborhood relationships, from which we all benefit.

Jennifer Davis and Michael Pollard
49 School Street

We are writing in support of the Hingham Centre play area. Since moving here nearly five years ago, the swings, see-saw, and climbing structure have been a fixture in our three kids lives and we always assumed it would remain that way.

It has served as a neighborhood meeting place, bringing together families and kids from Riverview and Studley Road, School Street and Middle Street. It is a constant after dinner walk destination for before bed fun. And its size and proximity have allowed us to give our 10-year old James the freedom to venture up there alone with friends, knowing neighbors could easily keep an eye on them.

From our perspective it is hard to see the downside in giving neighborhood children their own spot — we love seeing middle schoolers hanging at the swings likely sharing stories as much as we love seeing our kids there. They are close to home and safe.

We also support inclusion and believe in equal rights for all children and adults. That is why we accept that playground zoning requirements have evolved and that wood chips or another base will be required. Just as we allow historic homes to have asphalt driveways today and not ephemeral dirt paths, which were most common before 1850, we have to evolve. We ask that our neighbors understand the importance of having a neighborhood meeting spot for children and families — it builds community, encourages outside play and provides a backdrop for years of memories.

Finally, we thank the Hingham Centre Playground Committee for all their hard work and dedication to this project. They are working to appease both sides, while ensuring that a few loud voices do not overpower what is right for our kids and the future of our neighborhood.

Mary Beth and Jason Hamilton
5 Riverview Road

I am writing in support of the efforts the Hingham Centre Playground Committee are making to build a new and safe playground for young kids in the Hingham Centre neighborhood.

Although we recently moved from Middle Street, we lived there for 26 years, and raised four children in this awesome neighborhood. We felt so lucky to live in this location... so close to the library, the softball field (where we held many of my sons' birthday parties), the graveyard where the kids learned to ride their bikes, and the cute little playground where they could get their energy out. I know it is a rare opportunity to have neighborhood facilities now, as we are such a car-centric society. However, I will never forget watching my son and his best friend Jeff (who lived in your house), pack up their little red wagon with baseball bats, balls and mitts, and head around the corner to spend hours engaged in baseball practice, playing on the swings, and climbing on the monkey bars. It was something that was reminiscent of the 1950s, and gave the kids a sense of independence, yet in a location just a few steps from home.

However, I will say that our relationship with the playground was not 100% positive. When the boys were quite young, we had some run-ins with the playground equipment where the boys came out on the losing end. When Alastair was 4, he was see-sawing with his brother, got scared and jumped off before I could stop him. The metal see-saw slammed up into his mouth and he lost a tooth. My third son, Pierson, at a similar age, was climbing on the monkey bars with me standing right there to spot for him. With a quick slip of the foot, and again before I could intervene, his mouth hit the metal bar and he chipped a tooth. So, Playground - 2, Butlers - 0.

Because we loved the playground, but realized it was outdated from a safety perspective, I was delighted to hear that the community was raising money for an upgrade to modern equipment, with the safer set-ups we've all come to expect. However, I was also surprised (and a bit shocked) to learn that there were some objections to these upgrades. How could this be anything but a much-needed improvement and a wonderful resource for the Hingham Centre community.

I want to commend you and the committee for all your hard work on this project. I hope that it will be fruitful so that many more generations of kids will have the wonderful opportunity to have a neighborhood playground just down the street or around the corner, with all the benefits that that brings to families with young kids.

Rachel Butler
148 Downer Ave

The Hingham Centre Play Area has been a well-loved gathering spot for families and children for several decades. It's an important asset to the community that provides a safe, neighborhood space for kids to play. We support preserving and updating this neighborhood treasure for future generations of kids and families to enjoy.

Amy Moore
9 Riverview Road

We recently attended an "update meeting" on the proposed Hingham Center Playground. After listening to the update and current plans by the committee, the current process, and the possible options, we strongly support the proposed project as outlined at the neighborhood meeting.

With respect to the current play area, the environment is not safe. One example, the current swings has bolts sticking out of the bar with the swings. This is very dangerous. They don't even have any "bolt caps" to protect the kids from tearing into their hands. The rust and current condition of the 3 items seem to be beyond repair, thus new playground swings etc. would be safer for the kids. It would also be nice to place the new playground away from the spikes sticking out of the new black wrought iron fence surrounding the cemetery.

Also, it is important to make the environment ADA compliant with a 2019 option that makes sense for the neighborhood. This was also discussed and made perfect sense from the committee presentation on the need to be ADA compliant. We concur.

As residents of Middle Street, our children have enjoyed the swings and playground with the neighborhood kids. In many instances, our children would be babysitting some of the younger kids and would bring them to the Center Playground. A new playground would be a welcome improvement for the younger kids in the neighborhood.

From attending the meeting, it appears the project is well on its way to a positive solution. We commend the committee on their transparency on the project and we look forward to working with them on the new playground in 2019.

Tara and Tom Coveney
34 Middle Street

We support the new Hingham Centre play area and would love to see it built!

Angela and Charlie Barnard
30 Downing Street

I wanted to send a note expressing our support for the Hingham Centre play area project. We would love to see it come to life.

Ana Vonlderstein
21 Downing Street

I love the Hingham Centre play area proposal and would love to see it built.

Sarah Kuzniar
23 Downing Street

I'm a resident of Downing Street and would LOVE to see the proposed playground project come to fruition! Full support here — it's a wonderful space for children! We spent lots of time there (the see-saw!) when my kiddos were small.

Katie O'Brien
44 Downing Street

I very much support the building of the playground. My children have loved using the older equipment in the past, but would very much appreciate newer equipment! Thank you so much,

Jody Degreve
15 Downing Street

Thank you so much for all you are doing for the playground! The proposed plan looks wonderful and my children would love it!! Thank you!

Kim and Charles Haley
10 Downing Street

Hi! Just wanted to send our support for the updates needed to the Hingham Centre Playground. Both my girls played at the old playground and it's such a special place and location for a small playground.

Kate and Sean Newth
18 Downing Street

We are in favor of the new playground.

Melinda Reuter
26 Spring Street

We support this project to restore the Hingham Centre play area, and will help in any way that we can.

Bonnie and Fred Delay
27 Downing Street

I love Hingham Centre (especially as it pertains to the eating of bagels and cupcakes), and I am particularly impressed by the plan for increased accessibility.

Mike Lambert
5 Bradley Park Drive

Frequently Asked Questions

Why did the Town close the Hingham Centre play area?

The Town of Hingham closed the Hingham Centre play area in the spring of 2017 (and more recently removed the dilapidated play equipment) due to safety and accessibility concerns.

What are the goals of the project to restore the play area?

The main goal of this project is to reopen the Hingham Centre play area so that current and future generations can once again enjoy this special pocket play area for years to come. More specifically, the goals are as follows:

- Meet modern safety standards
- Be accessible to children of all abilities
- Serve children ages 2-5, but be dynamic enough to be enjoyed by older kids
- Keep to three pieces of equipment
- Maintain a similar size and scale to the existing play area
- Use earth tones to blend with the natural surroundings
- Choose durable, high-quality equipment that will last a long time

How did you come up with the new design?

We came up with the new design by gathering input from the community, and by working closely with Town of Hingham officials, playground equipment manufacturers, local installers, and local landscape architect Sean Papich.

Why did the design change after the Town approved it?

The original design was unopposed and unanimously approved during a public Board of Selectmen meeting on June 5, 2018. However, we revised the design by replacing the approved climber with a see-saw to address aesthetic concerns raised by some members of the community.

Has the Town approved the proposed changes to the design?

Yes. The Town issued a written letter of affirmation on December 12, 2019 stating that the Selectmen are in support of the revised/compromise plan, and committed to building the new play area in the spring of 2020.

How big is the proposed play area?

Per the site plan created by local landscape architect Sean Papich, the total area of the proposed plan is approximately 1,715 SF.

Why is the new play area being privately funded?

Unlike other playgrounds maintained by either the Hingham Recreation Department, or the Hingham Public School Administration, the Hingham Centre play area is maintained by the Hingham Board of Selectmen. Given the growing list of demands on the Town's resources, restoring the Hingham Centre play area is unfortunately and understandably not a priority.

Why did you choose equipment from Dynamo Playgrounds?

We considered three playground equipment manufacturers: Dynamo Playgrounds, BCI Burke, and Landscape Structures. All three companies make commercial equipment, but we ultimately chose Dynamo based on the results of our online survey, their innovative designs, and their reputation for making high quality equipment. Although it was not the deciding factor, we were also happy to learn that Boston, Newton, Brookline, Lexington, Marblehead, and more than a dozen other Massachusetts communities have installed Dynamo equipment.

Project Concerns

The proposed design is different than the original intent.

There were scant details about the original intent, or how the money being collected would be used when this community-led initiative began back in the spring of 2017. What followed was the formation of a playground committee comprising several concerned neighbors. This gave us the opportunity to create a more open and inclusive process that did not just reflect the intent of a few, but rather incorporated the varied interests of our community.

It is never easy balancing such diverse, and sometimes opposing views. However, after gathering input from over two hundred citizens, and working closely with Town officials, playground equipment manufacturers, local installers, and local landscape architect Sean Papich over the past two years, we believe we have a plan that does so exceptionally well.

The community has not had an opportunity to provide input.

From the beginning, we have been committed to creating a fair, transparent, and inclusive process that considers the varied interests within our community. Toward that end, we created a website (SaveHinghamCentrePlayground.com) and an email subscriber list, and conducted an online survey completed by nearly 200 respondents. In addition, the project was the subject of three separate articles in the Hingham Journal and Patriot Ledger, and we appeared before the Selectmen in an open meeting. Reasonable people can disagree about the appropriateness of any proposal, but no one can credibly argue that that they did not have ample opportunity to provide input prior to the Town's June 2018 approval.

The aesthetics are inappropriate for this site. Everything is bigger.

From the beginning, one of our goals is that we keep to three pieces of equipment that are a similar size and scale as the original. Though the proposed swing set and climber are slightly taller than the equipment they are replacing, the difference is imperceptible from any distance. Moreover, the proposed climber is half the size of the current jungle gym (i.e., 90 cubic feet vs 175 cubic feet).

Another one of our goals is to use colors that blend with the adjacent cemetery and natural surroundings. Aesthetics are extremely important to us too, which is one reason why we engaged with local landscape architect Sean Papich early on in the process.

The proposal calls for replacing grass with an artificial surface.

We all love the look of grass, but it does not provide a “firm, stable, and slip resistant” surface per state and federal accessibility guidelines. As a result, all new playgrounds, like Kress Field and the new Hull Street playground, feature poured rubber play surfaces. However, unlike those larger playgrounds, ours features just three pieces of equipment. Therefore, most of the play surface will comprise natural wood chips with just enough rubber to create a discrete pathway to the equipment so that children of all abilities may access it.

The new play area may create traffic and parking issues.

Due to limited parking and the fact that the play area comprises only three pieces of equipment, the current play area attracts mostly pedestrian traffic. Similarly, our plan features just three pieces of equipment and includes no changes to the current parking situation at Powers Field. We are not increasing the capacity of the play area, so there is little reason to think that restoring it will create parking issues.

The required excavation may impact nearby trees.

Though the wood chip play surface and accessible pathway will require some minor excavation, we do not expect it to adversely impact any of the adjacent trees. The Town could change its mind, but it is worth noting that when the Planning Department and Selectmen both approved the original plan to restore the play area in June 2018, they did so with the condition that no trees would be removed.

The play area is incompatible with the historic cemetery.

There has been a playground next to the cemetery for around 100 years. The two have been compatible for a century and, in our view, there are no legitimate grounds for thinking that that will change in the future.

There is another large and popular playground nearby.

If the playground next to the cemetery went away, neighborhood parents and grandparents would either have to drive to the playground behind the Town Hall or they would have to walk across busy Route 228 and Main Street, next to Dependable Cleaners and Hingham Centre Pharmacy.

The old playground equipment can be repaired/restored.

We know some people within the community have fond memories of the old play area. It has served our community well for several decades, but the equipment does not meet today’s safety standards, and is dilapidated with hazardous metal protrusions, sharp edges, and failing paint. Further, the play area is not accessible and the equipment is dangerously close to the wrought iron fence surrounding the cemetery per current fall zone guidelines.

Equipment Specs

— This page intentionally blank —



Product Name	Biggo Spia Solo Assembly 2
Product Number	DX-3175-A2
Size -- Width	6.53 m / 21' 5"
Size -- Height	2.67 m / 8' 9"
Foundations	3
Concrete Volume	0.87 m ³ / 30.7 ft ³

	ASTM F-1487	CSA Z614	EN 1176
Ages	2 years - 12 years	18 months - 12 years	2 years - 12 years
Capacity	6	6	6
Use Zone -- Length	9.17 m / 30' 1"	7.97 m / 26' 2"	7.13 m / 23' 5"
Use Zone -- Width	10.33 m / 33' 11"	10.27 m / 33' 8"	6.26 m / 20' 6"
Fall Height	2.29 m / 7' 6"	2.29 m / 7' 6"	1.32 m / 4' 4"
No-Encroachment Zone	Not Applicable	1.80 m / 5' 11"	Not Applicable

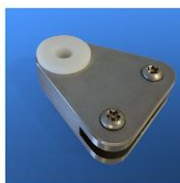
*Note: Concrete must be minimum 3500 PSI / 25MPa



Product Features:

SUPPORT POSTS:	This will be 5 9/16" (141.3mm) OD Schedule 40 steel pipe.
PENDULUM PIVOT:	This will be a stainless steel pivot with a self-lubricating UHMWPE bushing and pivot.
SUSPENSION CHAIN:	This will be either 5/16" or 8 mm galvanized steel chain. Each chain will have independent connections at seat and pivot.
SEAT CONNECTION:	The seat will be connected to the chain at four points, each by a one-piece machined stainless steel sleeve. (Patent Pending)
SEAT BUMPER:	This will be 3 1/2" (90mm) OD textile reinforced high-pressure rubber hose, containing no external dye markings and covered with a wear and soil resistant surface.
BIGGO™ SEAT:	This will be a one-piece aluminum bowl, weighing with its bumper and pieces no more than 42 lbs (19 kg) empty.
BASIC FASTENERS:	All fasteners for component attachments are stainless steel.
PAINT PROCESS:	All exposed steel will be finished with polyester powder coating unless otherwise specified. Prior to the powder coating application, the surface will undergo sand blasting and will be treated with a zinc rich epoxy primer having a minimum thickness of 1.5 mils.

INSTALLATION:	This should be installed only by a licensed playground installer, trained and certified on the relevant playground standards in place in the region of installation, e.g., NPSI, CPSI or similar certified.
NO-ENCROACHMENT ZONE:	Where required, this will be an obstacle-free zone that does not necessarily meet the requirements of the protective surfacing zone. See applicable standard for more information.
COMPLIANT WITH:	CAN/CSA-Z614 ASTM F-1487 EN-1176 CPSC Handbook for Public Playground Safety
OPTIONS:	Optional Equipment: <ul style="list-style-type: none">Polished Stainless Steel Post (Max. Qty: 4) #SS-POST



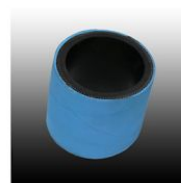
Pendulum Pivot



Galvanized Steel Chain



Biggo Seat Connector



Biggo Bumper



BASIC FEATURES

AGE GROUP: 5 to 12 years old
 FALL HEIGHT: 22" (0,6m)
 CHILD CAPACITY: 2 children
 DIMENSION (WT x DT x HT): 3'1" x 8'1" x 2'7" (0,9m x 2,4m x 0,8m)
 REQUIRED SURFACE: 17' x 22' (5,2m x 6,7m)



DESCRIPTION

The seesaw, a timeless classic for guaranteed fun!

ANCHORING



ON STRINGERS

This product is anchored to the ground by a system of galvanized steel stringers. Some parts of the stringers may be made of recycled plastic.

MATERIALS

METALS

Base: Steel tube(s) measuring 2-3/8"(60mm) in outer diameter.
Hardware: Made of stainless steel, camouflaged by HDPE safety caps.

PLASTIC MATERIALS

Seat(s): Made of HDPE polyethylene colored in the mass and treated against UV rays. All edges are rounded for maximum safety. (iv)

MECHANICAL COMPONENTS

Pivot(s): Tube secured to the beam of the seesaw rotating around the tube of the base. Presence of grease for maintenance and operation.

COATINGS

Paint: Painted metal parts are white blasted first, then coated with a primer and Z-series polyester powder, which has an extreme resistance to ultraviolet (UV) rays and weather. (iv)

COLOUR CHOICES

Steel



Made at our factory in Lévis, Québec, Canada • Meets CAN/CSA-Z614



TELEPHONE : 416-637-6246 • TOLL FREE : 1-877-ENFANTS
 EMAIL : jambette@jambette.com

www.jambette.com

EDITED: 18-12-17 • MODIFIED: 19-12-17
 Subject to change without notice



Product Name	Mini Apollo™
Product Number	DX-1200
Size -- Diameter	2.00 m / 6' 7"
Size -- Height	2.44 m / 8' 0"
Shipping Weight	485 kg / 1069.2 lb
Shipping Volume	4.18 m ³ / 147.6 ft ³
Foundations	1
Concrete Volume	0.27 m ³ / 9.5 ft ³

	ASTM F-1487	CSA Z614	EN 1176
Ages	2 years - 5 years	18 months - 5 years	2 years - 6 years
Capacity	15	15	15
Use Zone -- Diameter	5.66 m / 18' 7"	5.60 m / 18' 4"	6.00 m / 19' 8"
Fall Height	1.45 m / 4' 9"	1.45 m / 4' 9"	1.45 m / 4' 9"

*Note: Concrete must be minimum 3500 PSI / 25MPa



To verify product certification, visit www.ipema.org



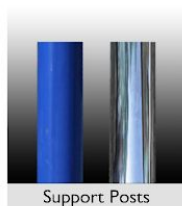
Product Features:

- MAIN SUPPORT POST:** This inner support post provides support and stability to the rotational system. This will be constructed of 5 9/16" (141.3mm) OD schedule 40 galvanized steel pipe, embedded in a concrete foundation.
- ROTATIONAL POST:** This outer support post provides the anchoring point for climbing nets and allows the unit to rotate as one. This will be constructed from 6 5/8" (168mm) OD schedule 10 steel pipe finished with polyester powder coating. The top will be finished with a 1/2" (13mm) thick top plate. Integrated climbing net connection points will be included on the top plate and along the rotational support post as required. Integrated connection points for the deck will also be provided as required.
- ROTATION:** The Rotational Post will rotate along with all other parts of the play equipment in a way that prevents clothing entanglements or pinching.
- HORIZONTAL RINGS:** These will be 2 7/8" (73.03mm) OD steel tubing finished with polyester powder coating. Rings will include integrated climbing net connection points as required.
- 20MM ROPE:** These will be 20 mm diameter polyamide (nylon) / polyester rope cable with UV protection and fire retardant solution. Each rope consists of 6 strands each containing at least 24 galvanized steel reinforcing wires within a polyamide (nylon) / polyester braid, wrapped around a solid polymer core for a total of at least 144 galvanized steel reinforcing strands. Rope shall achieve a Class 7-8 Colourfastness rating.
- NET CONNECTIONS:** Each location where the climbing nets meet the ring or post will have a one-piece stainless steel junction sleeve compressed onto the rope and affixed to the post or ring connector with a bolt and nut.

BALL KNOTS:	This will be a one-piece compressed aluminum ball, compressed in place with 150 tons force (667 kN) to prevent the connection from moving and causing premature cable wear.
BASIC FASTENERS:	All fasteners for component attachments are stainless steel.
BEARINGS:	This will be maintenance-free self-lubricating nylon, sealed and integrated into the central post, leaving no apparent mechanism.
DECKING:	This will be constructed of custom cut 1/8" (3.2mm) thick punched steel decking with 1 5/8" (41.3mm) angle frame, 1/8" (3.2mm) thick, welded perpendicular to the deck surface for support. Deck sections are coated with Polyarmor® G17 having a minimum thickness of 20 mils (508 µm).
INSTALLATION:	This should be installed only by a licensed playground installer, trained and certified on the relevant playground standards in place in the region of installation, e.g., NPSI, CPSI or similar certified.
NO-ENCROACHMENT ZONE:	Where required, this will be an obstacle-free zone that does not necessarily meet the requirements of the protective surfacing zone. See applicable standard for more information.
COMPLIANT WITH:	CAN/CSA-Z614 ASTM F-1487 EN-1176 CPSC Handbook for Public Playground Safety
TÜV CERTIFIED:	Certified to EN 1176:2008 TÜV SÜD Certificate N° ZI 13 08 84504 002
IPEMA CERTIFIED:	The DX-1200 identified in this specification sheet is IPEMA certified. The use and layout of the DX-1200 conforms to the requirements of ASTM F1487 and CSA Z614. To verify product certification visit www.ipema.org .



† Where proper surfacing is used, this product meets the ADAAG guidelines for accessibility, allowing the same play possibilities for people of all abilities.



Support Posts



Climbing Net - 20 mm



Net Connector



Ball Knot

Inspection Report

— This page intentionally blank —

OFFICE

Playground Inspections
Of New England, LLC
183 Sheep Pond Circle
Brewster MA 02631

PHONE

508-782-0263

EMAIL

nancy@playgroundinspectionsne.com

www.playgroundinspectionsne.com

- AUDITS – 3rd party
- INSPECTIONS – 3rd party
- PARK AND PLAYGROUND CONSULTANCY
- PROJECT MANAGEMENT
- PARK & RECREATION PURCHASING RESOURCES

Keep it safe. Keep it fun.

DATE: July 12, 2016

TO: Mark Thorell, Director of Recreation
Town of Hingham
210 Central Street, Hingham MA 02043
thorellm@hingham-ma.gov
p: 781-741-1464

FROM: NANCY A. WHITE, CPSI CPRP

SUBJECT: Position Paper
Powers Field, Hingham MA

On June 23, 2016 at 4:00 pm, I made a site visit to the above playground. The purpose of my visit was to visually inspect and assess the playground status as it relates to safety, following the guidelines of ASTM F1487-11, ASTM F1292-11 & CPSC Handbook Pub. No. 325. I was on site for the visual inspection for 1.15 hours.

I determined that a LFI [low frequency inspection] cannot be considered as an assessment tool, as the hazards, overall layout and accessibility is very poor. A comprehensive safety audit would be an option, at a cost of over \$1,000 and would require several hours onsite. You opted to consider a “position paper” which is a visual site inspection followed by a general report on the status of the entire park and playground. The report comments on the site status as it relates to age, functionality, and safety play value and maintenance. The report is neither an audit nor a low frequency inspection; both which assess the current status in detail and rate safety hazards. The purpose of this visual site inspection is to validate what we suspect to be true: the playground is in poor condition and needs to be removed.

The American Society of Testing Materials [ASTM] and the Consumer Product Safety Commission [CPSC] are the organizations that drive rules and regulations for public playgrounds. Neither are Mass General Laws, but is held up in the court system as “the standard of care” for towns, cities and other government entities. The Department of Justice [DOJ] is the governmental authority with ADA requirements.

The National Playground Safety Institute has a 5 point rating system for hazards. A priority hazard 1 is defined as “a hazard that can cause death or permanent impairment.” In a position paper, I do not cite the hazard with the page and section of ASTM F1487, 1292 or CPSC. However, I have included a CPSC for your reference, which is very user friendly. To follow for your review, is a list of hazards and/or equipment that is out of code, and comments, in no particular order.

- All three pieces of equipment [see saw, jungle gym and swings].
- The equipment is at least 40 years old. The manufacturer is unknown.
- There are multiple crush and shear points most notably on the fulcrum of the teeter totter. I put a stick in and moved the unit up and down, and it crushed and cut the stick.
- There are entanglements throughout the entire “jungle gym”.
- It is evident there has been no preventative maintenance on any equipment.
- There is no impact attenuation material under the use zone of any piece of equipment.
- The ‘jungle gym’ has multiple protrusions, which are ‘projections’ and when tested are found to be a hazard having the potential to cause bodily harm.
- There are sharp edges throughout all three pieces of equipment.
- All public playground equipment must have a use zone which is defined as “an area totally clear of any type of equipment or natural barrier that may impede or encroach to the use of that particular piece of equipment”. There should also be unrestricted circulation around the equipment. None of the equipment at Powers has a properly defined use zone or the proper circulation.
- There is no protective surfacing that is ‘shock absorbing’ aka impact attenuating surfacing. Grass and dirt are unacceptable.
- There is no entrance and egress to the ADA equipment.
- There are no signage or labels.
- Two swing seats that are different types, cannot be in the same bay. There is a toddler bucket and belt seat in the same bay.
- The land is not level. Within 2-3 feet on one side, the land slopes down toward the cemetery, thus there is no use zone.
- Hardware is protruding.
- As the three pieces of equipment are over 40 years old – there may be lead paint present.
- All climbers should have a clear fall through, if by chance children trip or lose their balance.

In my professional opinion, all three pieces should be removed immediately.
Thank you for the opportunity to provide this paper.
Please feel free to contact me if you have further questions.

Regards,

Nancy A. White

Nancy A. White CPRP, CPSI
Certification # 180860514
nancy@playgroundinspectionsne.com

POWERS FIELD
HINGHAM, MA

VISUAL SITE INSPECTION JUNE 2016



NANCY A. WHITE, CPSI CPRP
PLAYGROUND INSPECTIONS OF NE, LLC
183 SHEEP POND CIRCLE, BREWSTER MA 02631

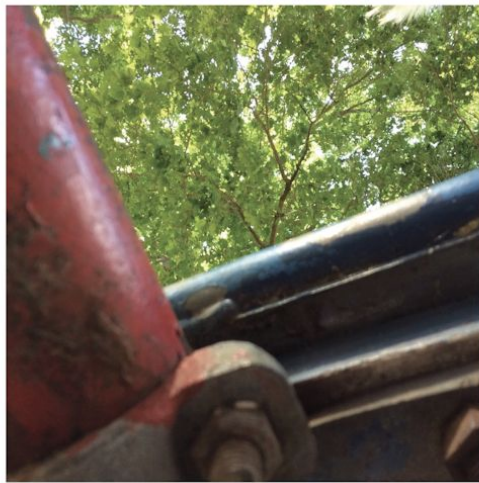


ADDITIONAL PLAYGROUND PHOTOS



Additional Photos : Powers Field

ADDITIONAL PLAYGROUND PHOTOS



Additional Photos : Powers Field

ADDITIONAL PLAYGROUND PHOTOS



Additional Photos : Powers Field